

Dental Clinic for Lease or Sale

8101 South Walker, Suite C, Oklahoma City, OK 73109



OFFICE SPACE NOW AVAILABLE

Available SF:	3,220 SF
Lease Rate:	\$15.50 SF/yr (NNN)
Lot Size:	0.0 Acres
Sale Price:	\$399,900 or, \$124.19 per SF
Building Size:	3,220 SF
Building Class:	A
Year Built:	1998
Market:	South Oklahoma City
Sub Market:	North Moore
Cross Streets:	I-240 & S. Walker

FOR MORE INFORMATION, CONTACT

Derek James
djames@priceedwards.com
405.843.7474
210 Park Ave, Suite 700
Oklahoma City, OK 73102
www.priceedwards.com

PROPERTY OVERVIEW

This is a Condominium project, leasing a Unit Ownership Estate governed by a recorded Declaration of Covenants, conditions and Restrictions, Doc. #1998120998, book 7386, pages 813-877, filed 8/24/1998

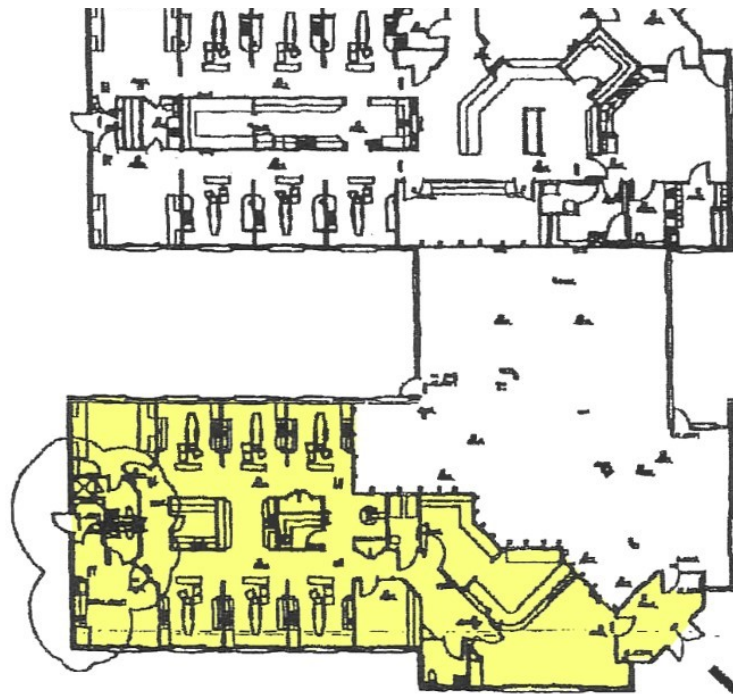
Shared vestibule entry with an accounting firm, this ready-built dental clinic is made to order for a start-up or, expanding clinic. Six (6) chair exam spaces, two (2) nurses stations, two (2) private, ADA compliant restrooms, a lab room, three (3) private offices and a large waiting room make this an ideal spot for your next clinic

LOCATION OVERVIEW

This beautiful dental clinic is located front and center in the Southpointe Condominium complex, featuring mature and plush landscaping, drive-up free surface parking and monument signage. With an exit off I-240, Southpointe is easily accessible from all points in the Metro.

Dental Clinic for Sale or Lease

8101 South Walker, Suite C, Oklahoma City, OK 73109



FLOOR PLAN

THIS FLOOR PLAN IS NOT TO SCALE

- 1. ALL DIMENSIONS ARE APPROXIMATE
- 2. ALL DIMENSIONS ARE APPROXIMATE
- 3. ALL DIMENSIONS ARE APPROXIMATE
- 4. ALL DIMENSIONS ARE APPROXIMATE

